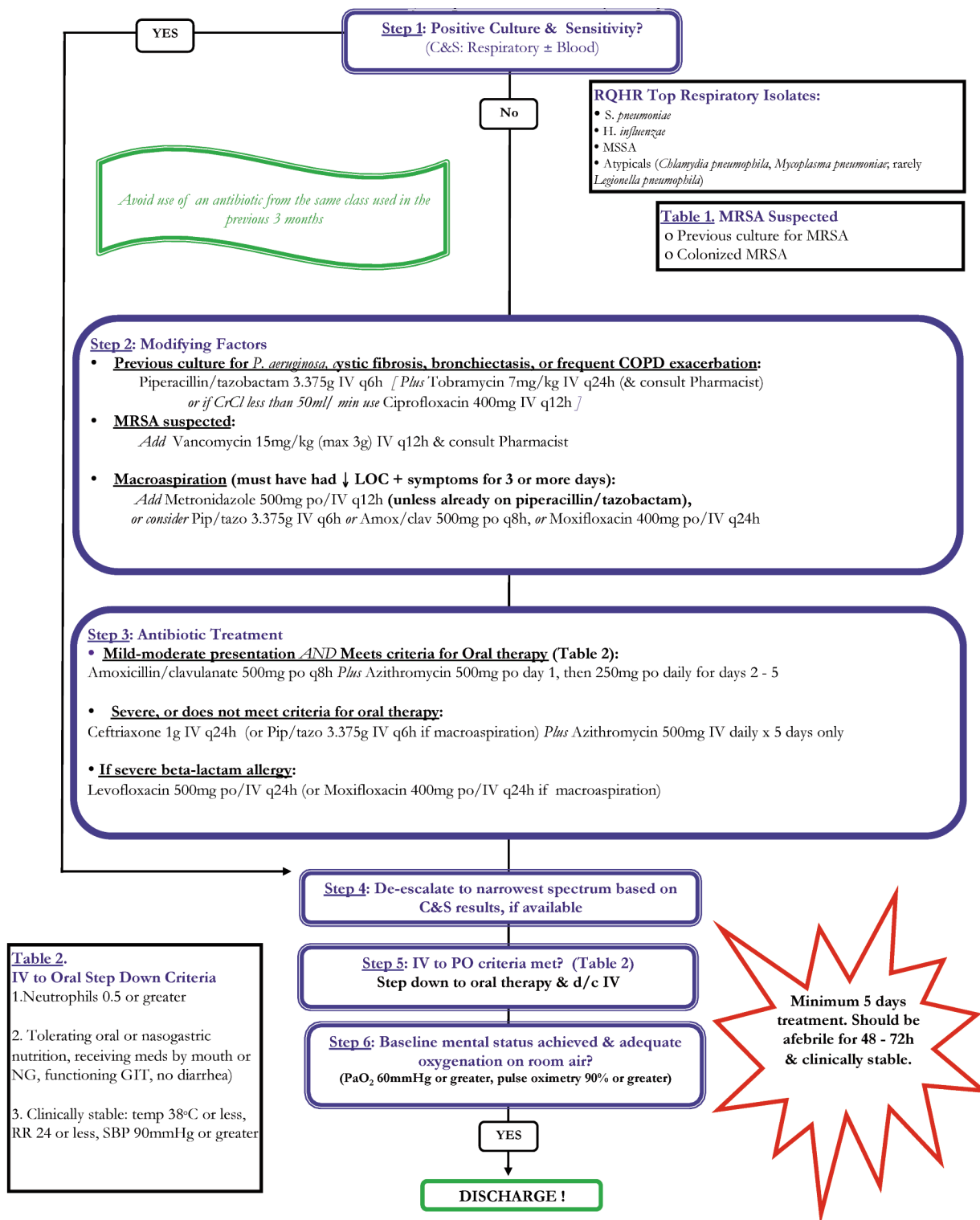
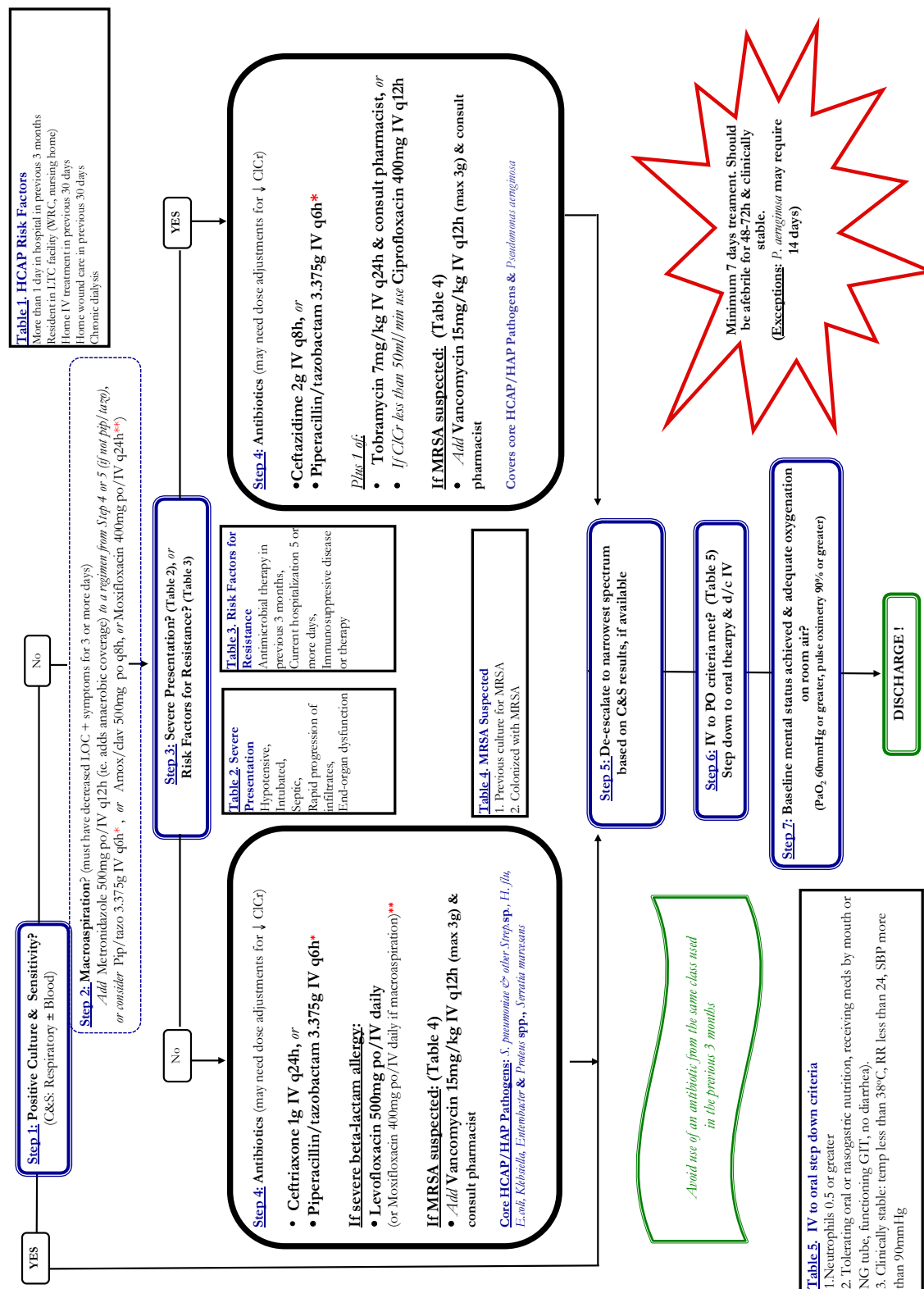


Appendix 1. Inpatient treatment of community-acquired pneumonia for patients in hospital less than 48 h (non-intensive care unit). Copyright © 2012 Regina Qu'Appelle Health Region. This algorithm is based on local (RQHR) outpatient respiratory isolate susceptibility available at the time the study was conducted and, as such, may not apply to other centres.



Supplementary material for Halpape K, Sulz L, Schuster B, Taylor R. Audit and Feedback-Focused approach to Evidence-based Care in Treating patients with pneumonia in hospital (AFFECT Study). *Can J Hosp Pharm.* 2014;67(1):17-27.

Appendix 2. Inpatient treatment of hospital-acquired or health care-associated pneumonia (non-intensive care unit). Copyright © 2012 Regina Qu'Appelle Health Region. This algorithm is based on local (RQHR) outpatient respiratory isolate susceptibility available at the time the study was conducted and, as such, may not apply to other centres.



Supplementary material for Halpape K, Sulz L, Schuster B, Taylor R. Audit and Feedback-Focused approach to Evidence-based Care in Treating patients with pneumonia in hospital (AFFECT Study). *Can J Hosp Pharm.* 2014;67(1):17-27