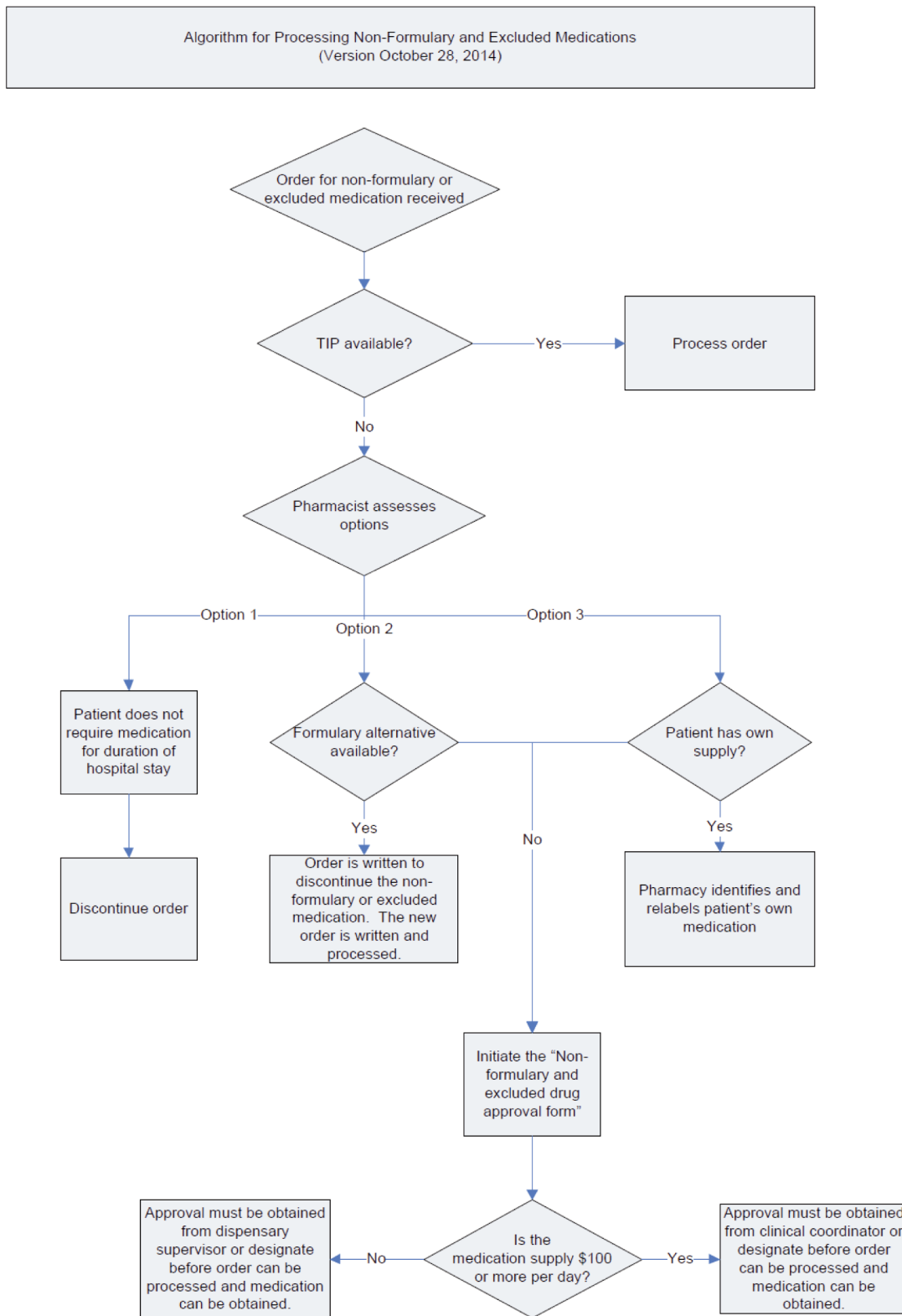


Appendix 1: Algorithm for assessing nonformulary medication orders in the Lower Mainland Pharmacy Services. © 2014 Lower Mainland Pharmacy Services. Reproduced with permission.



Supplementary material for Chang E, Kinkade A, Tung ACH, Tejani AM. Going through the motions: a time-and-motion study of workload associated with nonformulary medication orders. *Can J Hosp Pharm.* 2017;70(2):133-7.